

# wespir MASK premium+

## TRIPLE LAYER SHELL MASK

Category 1 mask

(91% filtration of particles > 3 µm (microns).

Breathability: air permeability test

> 96L.m<sup>2</sup>.s-1 for a vacuum of 100 Pa.

Adjustable nose clip

For greater comfort, designed to limit contact of the mouth with the fabric.

Adjustable straps.

### Outer layer

made from quilted mesh fabric 3D mesh (light and breathable).

### Middle layer

100% cotton 190 gr.

### Inner layer

Made from Viscose polyester 180 gr.



All our fabrics are Oeko Tex certified

Barrier masks AFNOR SPEC S76-001:2020

DGA test protocol 25 March 2020. Materials performance measured by IFTH laboratories, Avenue Guy de Collongue, 69134 Écully (report 2020-07-31-005-0) withstands 50 washes (report 20-03015).

## How to wear the mask correctly

To be effective, the shell mask must be used and worn correctly: on bare skin without the presence of hair and if possible on shaven skin. Before any use, you should wash your hands with soap and water or rub clean with hydroalcoholic gel (sanitizer).

### How do you properly adjust the shell mask?



1) Locate the top of the mask - the part with the nose bridge - and attach the mask around the ears holding it by the elastic straps or ties, and avoiding touching the fabric front part.



2) Pull down the bottom of the shell mask under the chin, only touching the edge of the mask.



3) Pinch the nose bridge to ensure sealing. Once adjusted, do not touch the mask with your hands.

### How do you remove the shell mask?

To prevent any contamination when removing the shell mask, it must be removed carefully and isolated before being thrown away or washed :

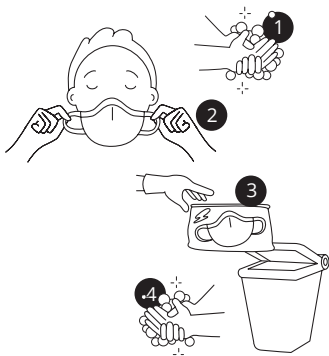
1) Remove your protective gloves if wearing, wash your hands with soap and water or rub clean with a hydroalcoholic gel (sanitizer).

2) Grasp the ties (elastic strips, straps, etc.) at the back without touching the fabric front part.

3) Place the barrier mask to be washed in a container specifically for masks to be washed. Avoid any contact between a worn face mask and other clean laundry.

If the mask is to be disposed of, isolate it in another container specifically for masks to be thrown away. Do all these actions still without touching the fabric front of the mask.

4) Wash your hands again with soap and water or rub clean with a hydroalcoholic solution (sanitizer).



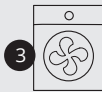
### Wash and dry, or dispose of your shell mask



1 Protect yourself when handling worn masks. > It is recommended that you clean your washing machine before washing shell face masks, by carrying out a cold rinse with bleach, or by running a wash cycle with the machine empty at 60°C or at 95°C without spinning.



2 > Use your normal detergent. The use of softener is not recommended. > The full wash cycle (wetting, washing, rinsing) must be at least 30 minutes long at 60°C.



3 > The shell mask must not be left to air dry: it should be dried in a dryer and the filters of the dryer should be cleaned afterwards (and then wash your hands). > The mask must be fully dry before re-using.



4 > Lastly, the mask should be ironed for full disinfection at a temperature from 120° to 130°.

If you notice that the shell mask is damaged in any way (deformation, wear, etc.) it must be thrown away.

### End-of-life of a mask

To dispose of a shell mask, it must be bagged before being placed in a bin, and the bin itself should have a bin bag. This double-bagging is unfortunately not "zero" waste, but it is necessary.

4 hours

50 washes

#### WARNING

Wearing a mask does not exonerate users from the protective measures and in particular social distancing.

#### Usage period and life of a mask

The mask must be washed each time it is worn or damp. It must not be placed in a "standby" position over the forehead or under the chin during and after use. The usage period is less than 4 hours (equivalent to half a day). Within these 4-hour periods, the mask can be used several times if removed and put on again as per the instructions and stored or hung on a hook to limit contact as much as possible.

To re-use a mask for another 4-hour period, it MUST have been washed.

Our masks are guaranteed for 50 washes. They MUST be disposed of after these 50 washes.

Storage: Unused masks must be stored clean and dry, in clean packaging, hermetically sealed and away from light.

Use situation: This mask is strictly suited to the health crisis associated with COVID-19.

These are neither medical devices, as per Regulation EU 2017/745 (surgical face masks), nor personal protective equipment, as established by Regulation EU 2016/425 (FFP2 face masks).